

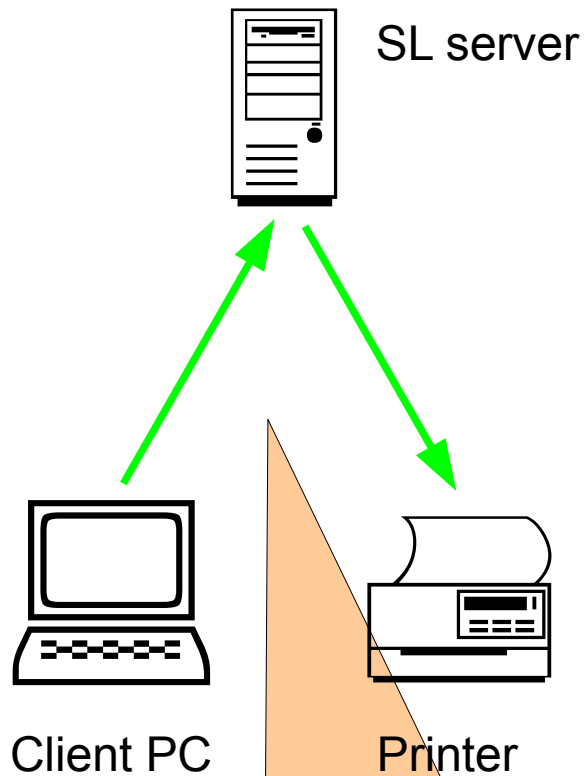


SQL-Ledger Zurich Conference, 19-20 April 2011

## **WLprinter plugin**

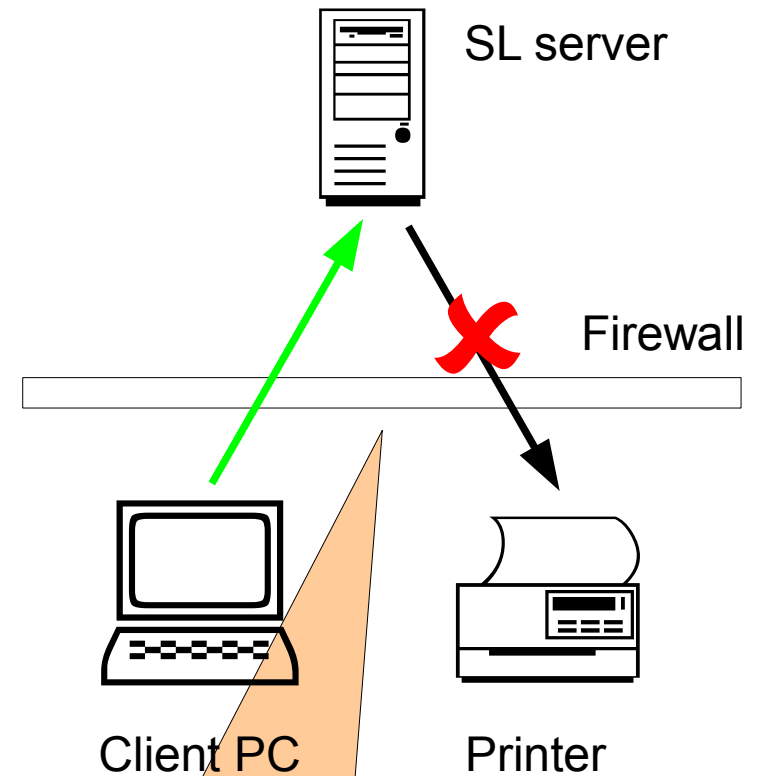
Rolf Stöckli / „Tekki“

## SQL-Ledger in the local network



An SQL-Ledger server that runs in the same network as its clients sends its print jobs directly to the printer.

## SQL-Ledger in the internet



If the server is placed in the web the printers are part of a private network that is hidden behind a firewall



- AR**
- Add Transaction
- Sales Invoice
- Credit Note
- Credit Invoice
- Reports**
- Transactions
- Outstanding
- AR Aging
- Reminder
- Tax collected
- Non-taxable
- Customers**
- AP**
- Vendors**
- Cash**
- Order Entry**
- Warehouses**
- General Ledger**
- Goods & Services**
- Reports**
- Batch**
- Exchange Rates**
- System**
- More Reports**
- New Window**
- Tools**
- Logout**

**Edit Sales Invoice**

Customer \*  ?

Customer Number

Engi

Credit Limit 0 Remaining -38

Record in

Currency

Warehouse

Shipping Point

Ship via

Waybill

On Hold

DCN

Description

Department

Salesperson

Invoice Number

Net  days

If we want to print an invoice...

Item	Number	Description	Qty	Unit	Price	%	Extended
<input type="text" value="1"/>	<input type="text" value="300020"/>	<input type="text" value="Die Flurnamen von Engi"/>	<input type="text" value="1"/>	<input type="text" value="Stk"/>	<input type="text" value="38.00"/>	<input type="text" value=""/>	<input type="text" value="38.00"/>
<input type="text" value="2"/>	<input type="text"/>	<input type="text"/>	<input type="text"/>	<input type="text"/>	<input type="text"/>	<input type="text"/>	<input type="text"/>

Group

Notes

Internal Notes

**Subtotal 38.00**  
**Total 38.00**

Payments				
Date	Source	Memo	Amount	Account
<input type="text"/>	<input type="text"/>	<input type="text"/>	<input type="text"/>	<input type="text" value="11102--Bank GRB 42 0.103.080.09"/>

Outstanding: 38.00

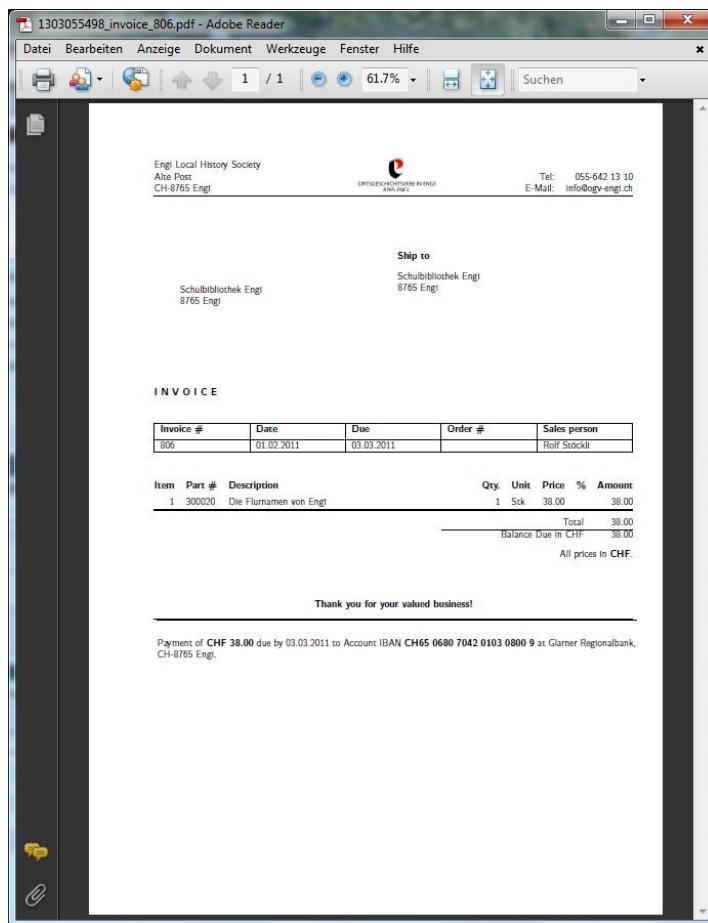
Invoice  PDF  Screen  Copies  Printed

Group by ->  Project  Group    Sort by ->  Item  Number  Description  Bin

Invoice [ ] [ ] PDF [ ] Screen [ ] Copies 1

Group by ->  Project  Group Sort by ->  Item  Numl

Update Print Post Ship to E-mail Print and Post Post a



...we print it to screen, open it with AdobeReader and send it manually to the printer.



Drukken

Drucker: Brother HL-2030 series [ Eigenschaften ]

Status: Bereit  
 Kommentare und Formulare: Dokument und Markierungen

Typ: Brother HL-2030 series

Druckbereich:  
 Alles  
 Aktuelle Ansicht  
 Aktuelle Seite  
 Seiten 1

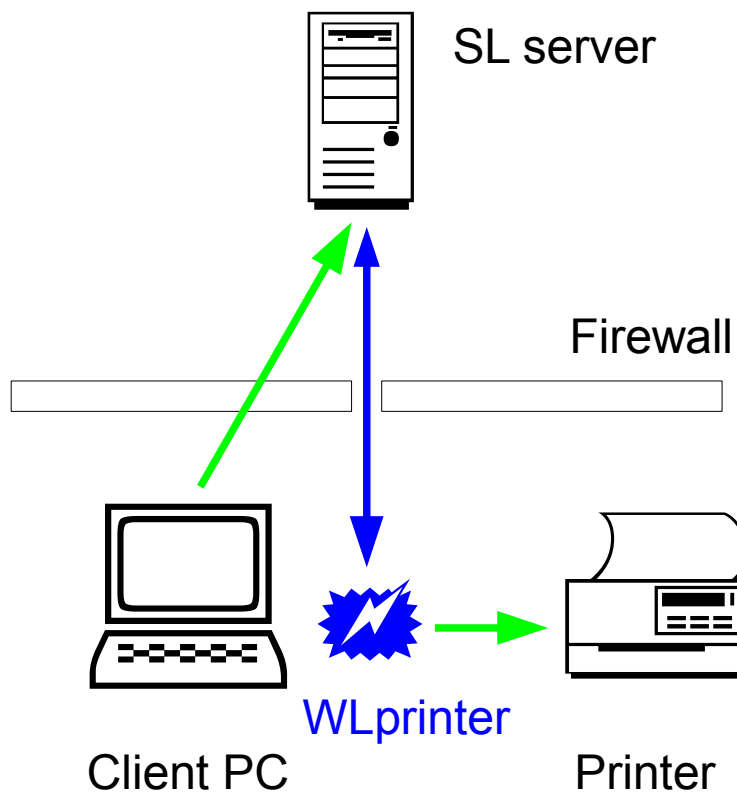
Drucken: Alle angegeb. Seiten [ ] Seiten umkehren

Seiteneinstellungen  
 Exemplare: 1 [ + ] [ - ] [ Sortieren ]  
 Anpassen der Seitengröße: Keine [ ]  
 Automatisch drehen und zentrieren  
 Papierquelle gemäß PDF-Seitengröße auswählen  
 Bei Bedarf benutzerdef. Papierformat verwenden

Ausgabe in Datei umleiten

Vorschau: Unsepariert  
 209.97  
 296.93  
 Dokument: 209.9 x 296.7mm  
 Papier: 209.9 x 296.7mm  
 1/1

Drucktipps Erweitert OK Abbrechen



WLprinter does the same,  
but automatically

Requirements on the client PC:

- Java
- Adobe Reader (Windows)

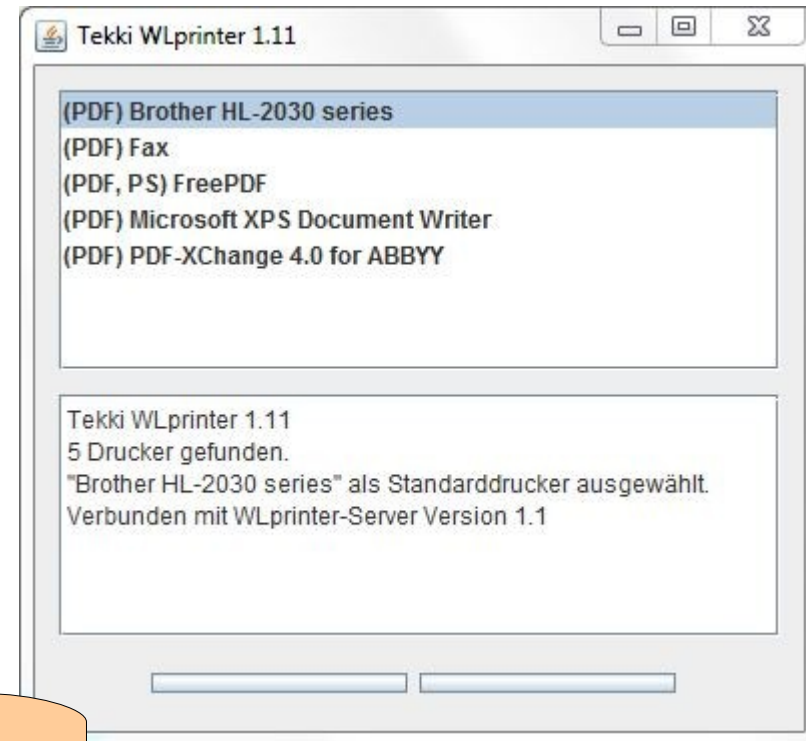
more reports

**New Window**

**Tools**

WLprinter  
Stylesheet  
Preferences  
Version  
User Manual

**Logout**



You start the WLprinter client from the SQL-Ledger menu.

Invoice [ ] [ ] PDF [ ] WLprinter [ ] Copies 1

Group by ->  Project  Group ~~Sort by~~  Item  Numb

Update Print Post Ship to E-mail Print and Post Post a

Then you print or print and post in SQL-Ledger to WLprinter and the client application does the rest for you.



Tekki WLprinter 1.11

(PDF) Brother HL-2030 series  
(PDF) Fax  
(PDF, PS) FreePDF  
(PDF) Microsoft XPS Document Writer  
(PDF) PDF-XChange 4.0 for ABBYY

Tekki WLprinter 1.11  
5 Drucker gefunden.  
"Brother HL-2030 series" als Standarddrucker ausgewählt.  
Verbunden mit WLprinter-Server Version 1.1  
18:05:28: drucke auf Brother HL-2030 series



Brother HL-2030 series - Drucker offline verwenden

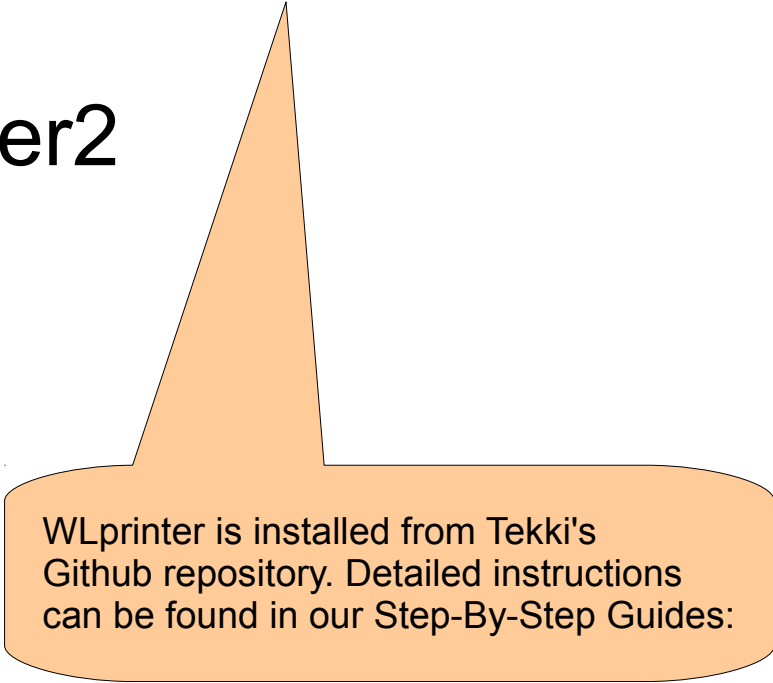
Drucker	Dokument	Ansicht	Status	Besitzer	Seiten	Größe
	0000137117.pdf			tekki	1	111 KB

1 Dokument(e) in der Warteschlange

# Installation

`git://github.com/Tekki/ledger123-testing.git`

Branch: `wlprinter2`



WLprinter is installed from Tekki's Github repository. Detailed instructions can be found in our Step-By-Step Guides:

<http://redmine.sql-ledger-network.com/redmine/projects/isna/wiki/Installation>





SQL-Ledger Conference, Zurich, 19 April 2011

## **WLprinter plugin**

Rolf Stöckli / „Tekki“